

Meetings & Events

The Alan

ENQUIRE HERE

SITU

SITU is situated on the lower ground of The Alan hotel. Our industrial environment is the perfect setting to bring your event to life and let your imagination run wild with it's endless possibilities.

SITU is your blank canvas to create the ultimate event. Whether it be a fashion show, pop up gallery or conference, we can do it all.



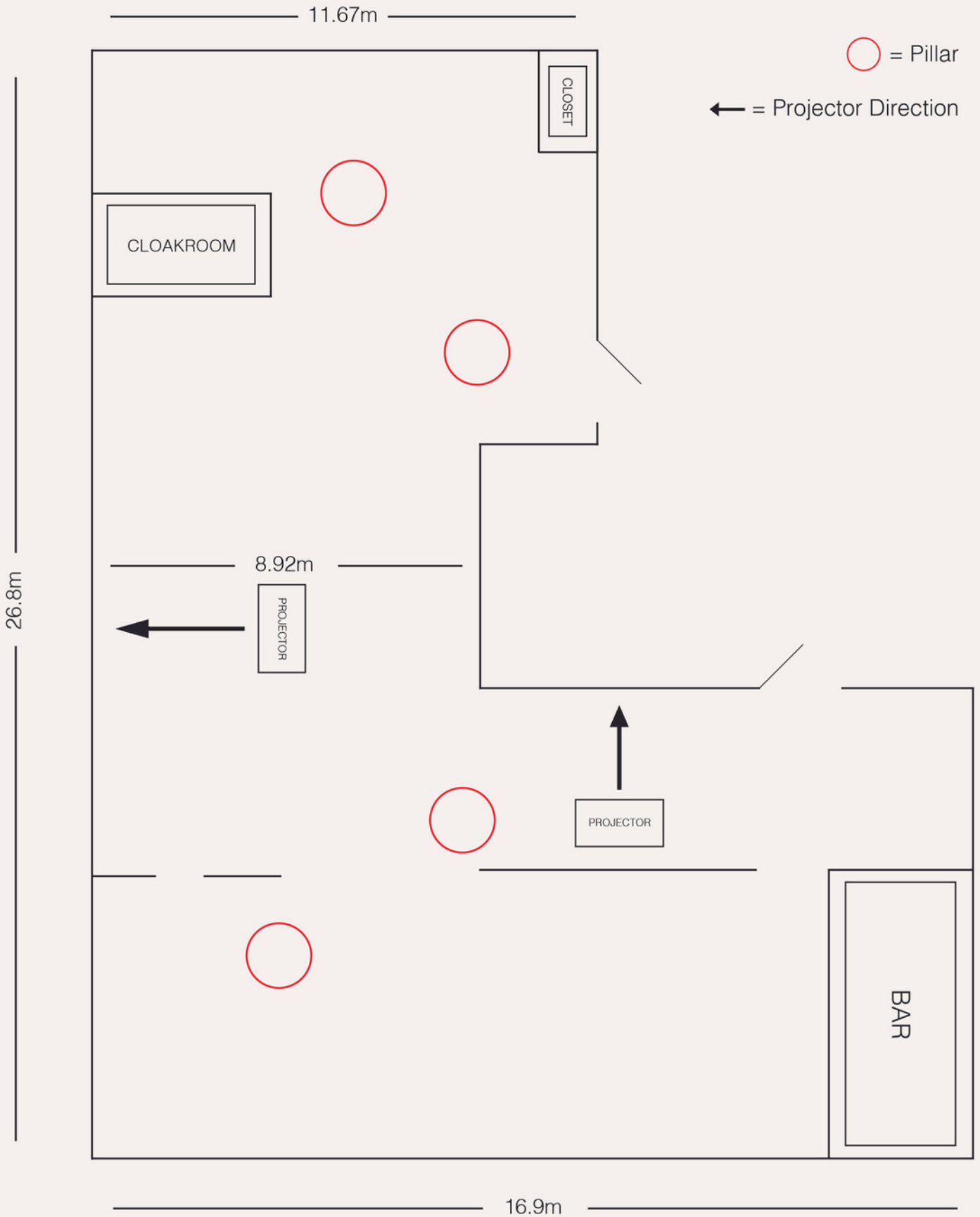
*Mock set up



*Mock set up

SITU

FLOORPLAN



SITU

FACILITIES

- Large TV screens
- Full AV System
- Projectors
- Private Bar
- Cloakroom

*Mock set up,
furniture available to
hire.



The Alan is the perfect setting for private meetings + events. An inspiring space, to work, create or party, fit for whatever you can stretch your mind to. Our private hire spaces can comfortably accommodate between 10 and 150 guests with a wonderful range of food and drinks menus.

[ENQUIRE HERE](#)

Events Spaces

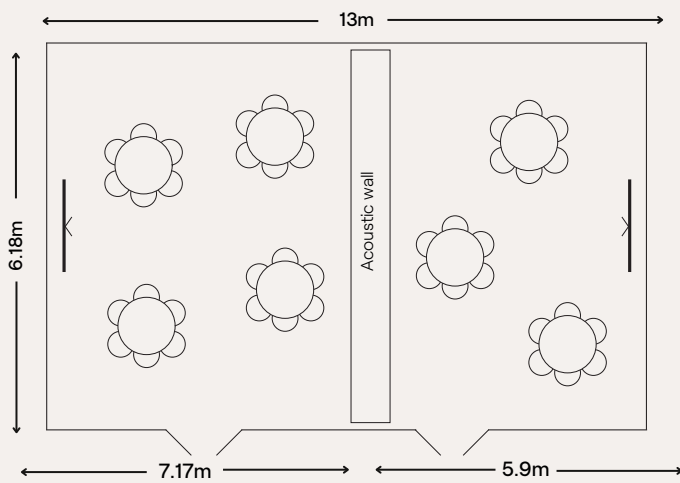


Events space 2

FACILITIES

- Large TV screens
- Flipcharts
- Air con
- Bluetooth speaker
- High speed wifi

Events 1 + 2



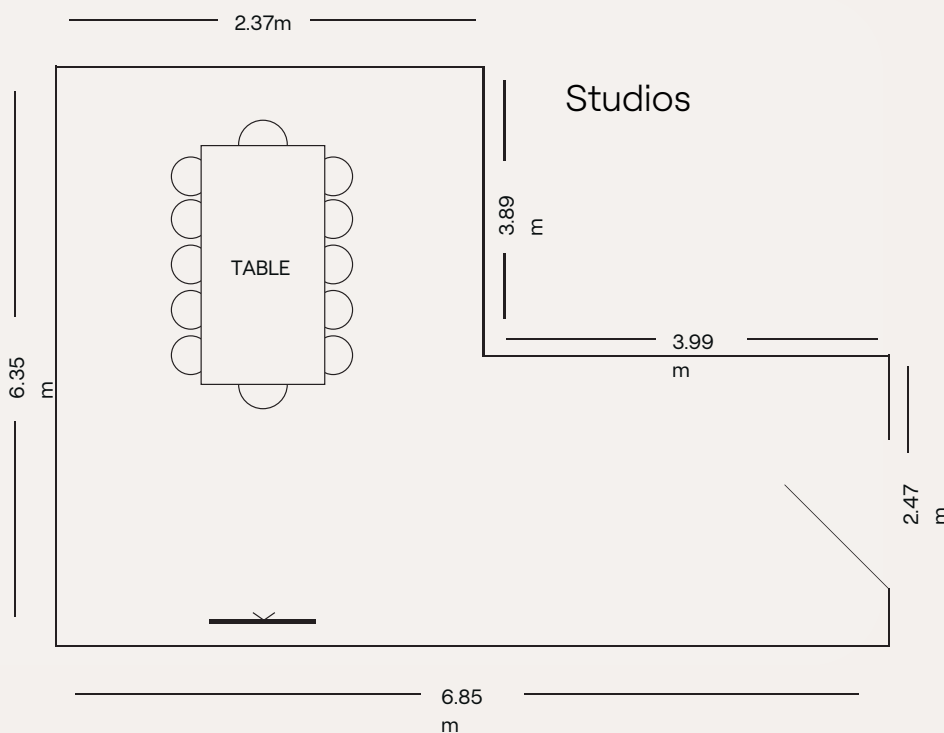
Events space 1

For more information and pricing email: meet@thealanhotel.com



Breakout space

Studios



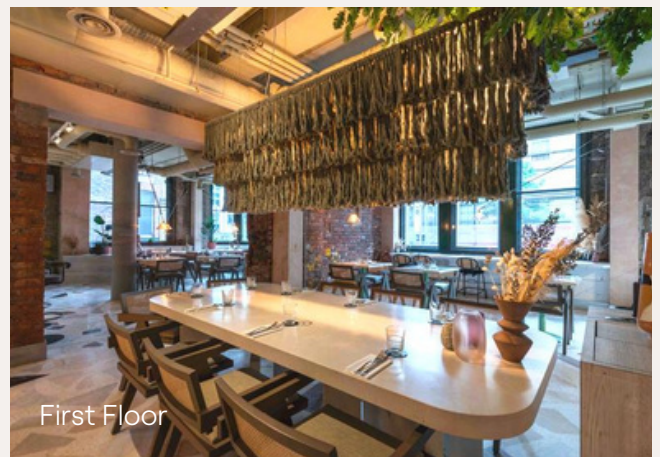
FACILITIES

- Large TV screens
- Flipcharts
- Air con
- Bluetooth speaker
- High speed wifi
- Charging tower

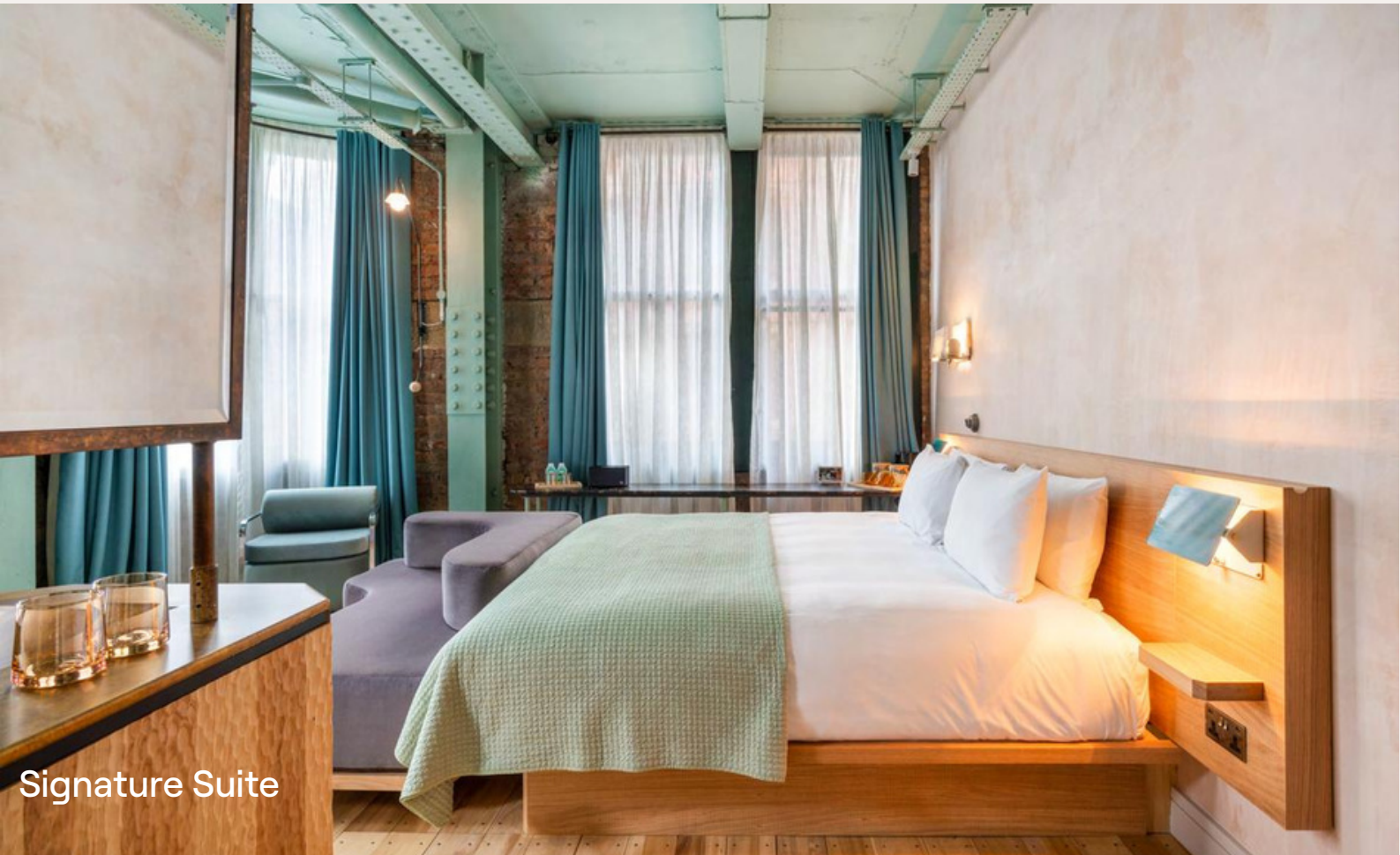
Our boardroom style studios are situated on floors 2 and 3 of The Alan, for a more secluded and private feel. A great space to pitch a presentation. And why not pop downstairs to our beautiful restaurant on your lunch break?

Capacity

	Boardroom	Cabaret	Standing	Banquet	Classroom	Theatre
Event 1	15	30	N/A	32	25	40
Event 2	15	24	N/A	32	25	40
Event 1 + 2	30	54	N/A	64	50	85
Studio 2	10	N/A	N/A	N/A	N/A	N/A
Studio 3	10	N/A	N/A	N/A	N/A	N/A
SITU	N/A	60	220	144/160	N/A	120



Stay with us

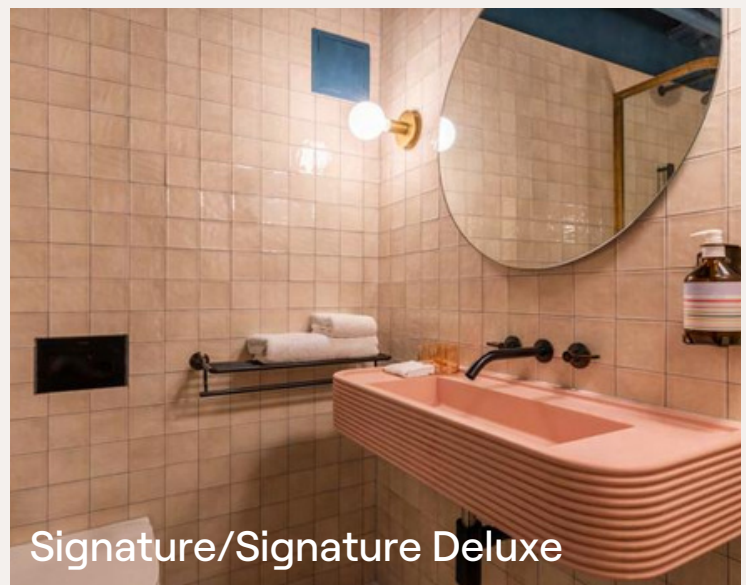


Signature Suite



[Find out more here](#)

Our rooms range from Classic, to Signature Suites with Signature and Signature Deluxe in between, making sure there is something to suit everyone.



Signature/Signature Deluxe



Dine

Dine In SITU

- Sit down dinners (with staging) 144
- Sit down dinners (without staging) 160

Dine upstairs

Our open house ground floor has a total capacity of 102 guests seated.

By area this is as follows

- Restaurant capacity - 30 Covers
- Open lobby capacity - 46 Covers
- Bar Capacity - 28 Covers

For a reception or cocktail style event our open house ground floor can host 200 guests

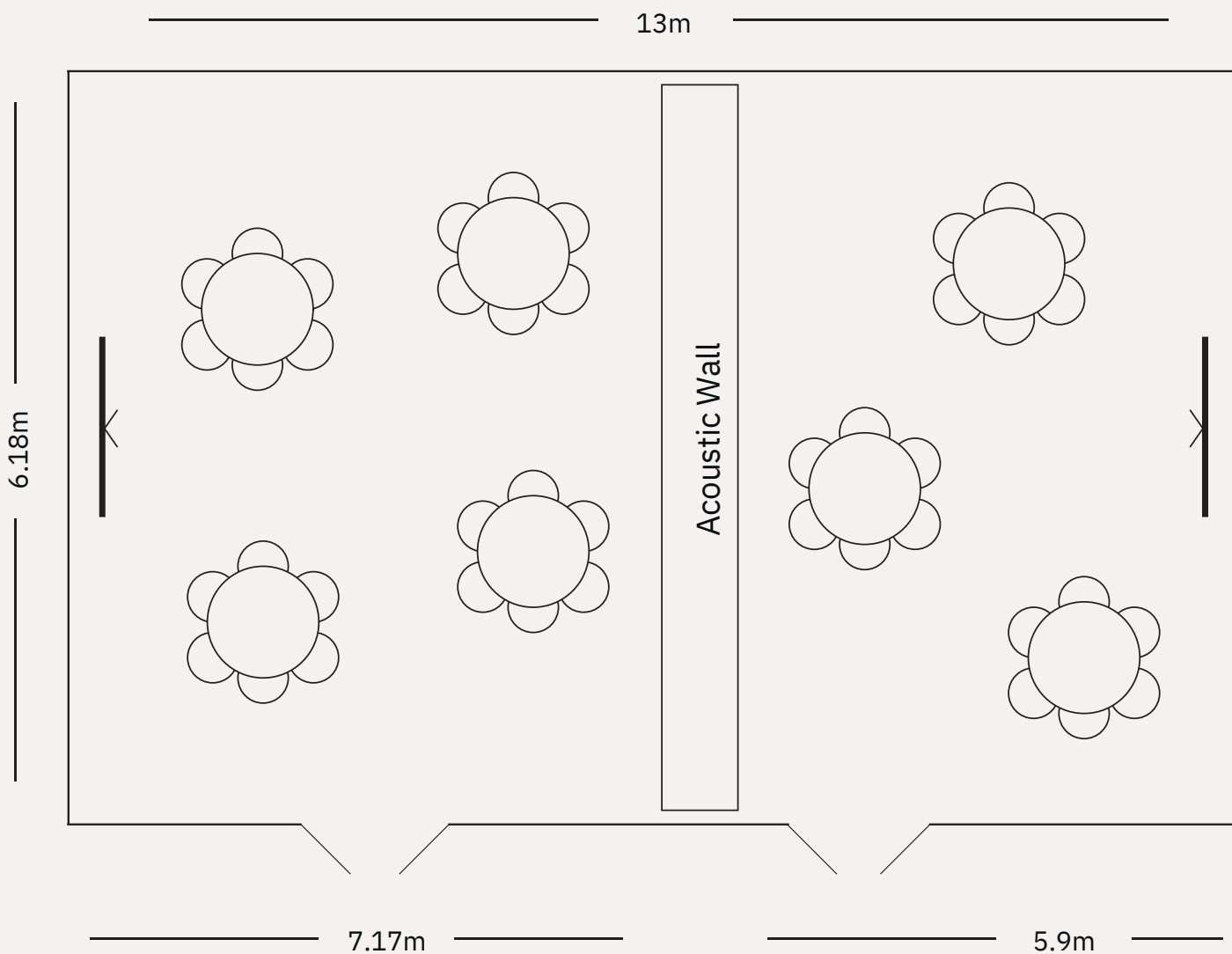
For private buy outs, contact meet@thealanhotel.com

We offer a group dining lunch menu, made with local, seasonal and sustainable produce. Served family style with hot and cold food options



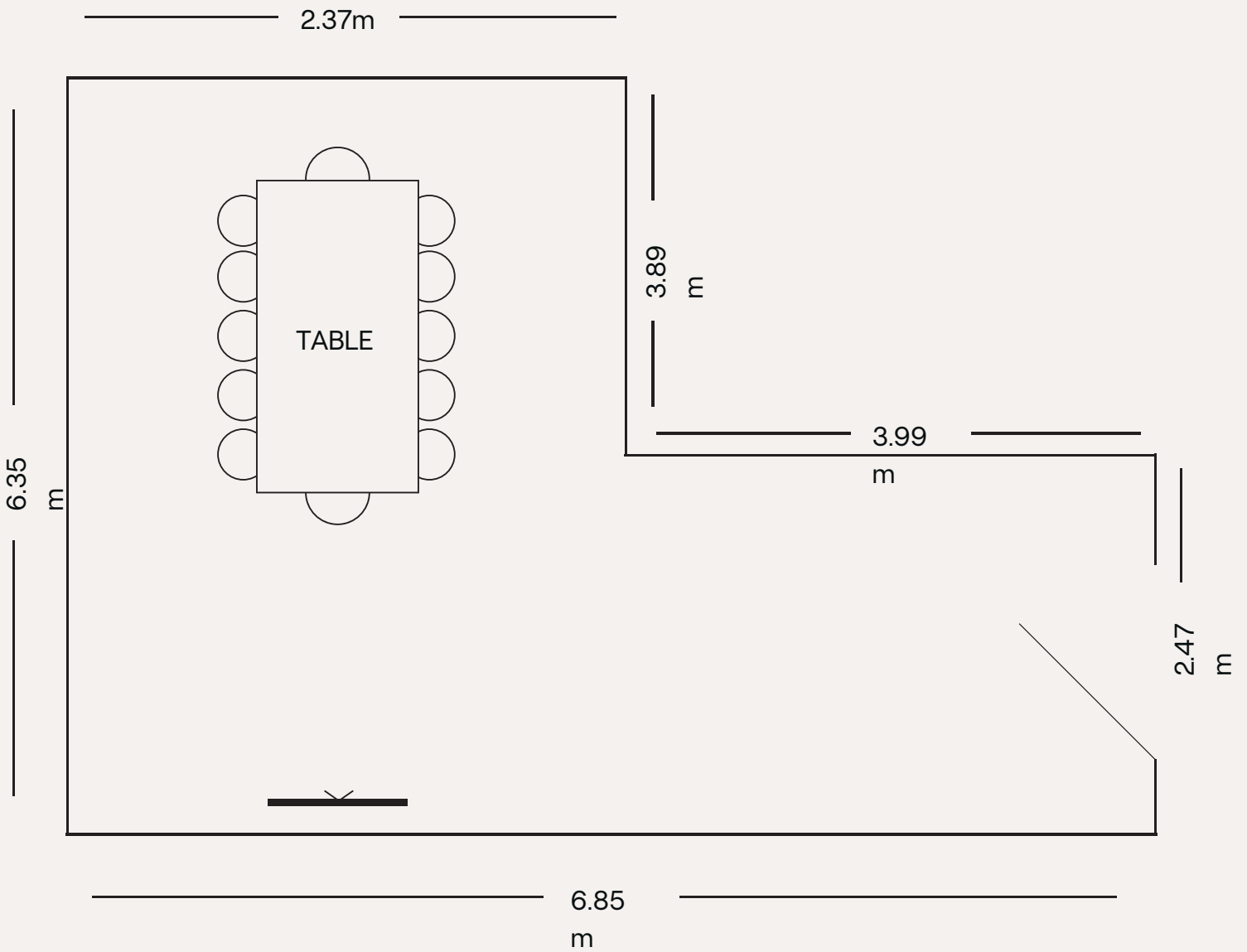
Events 1 + 2

FLOOR PLAN



Studios

FLOOR PLAN



SITU

FLOOR PLAN

